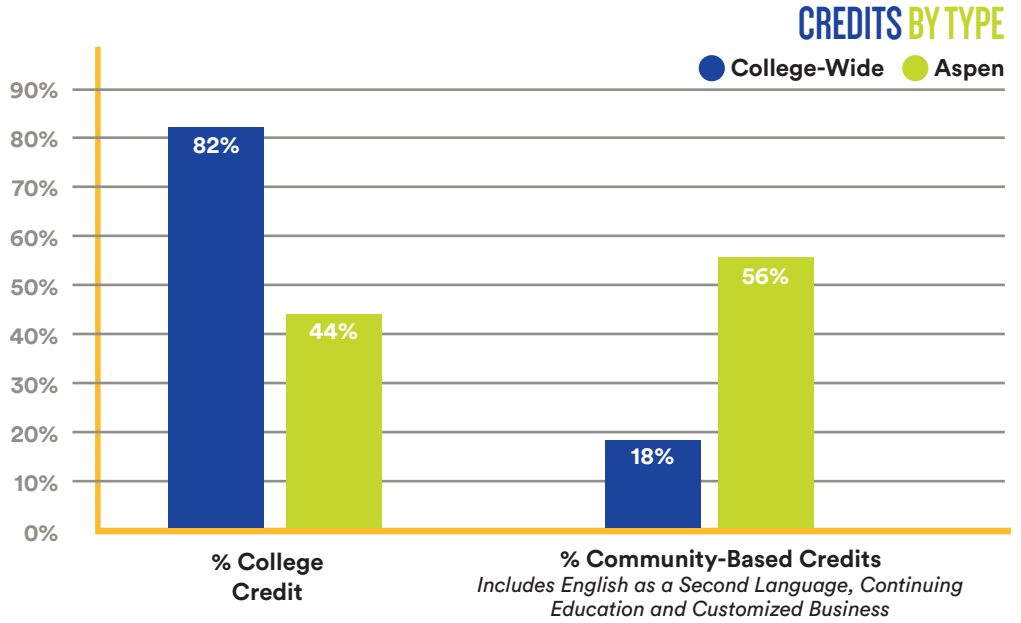




THIS INFORMATION IS USED TO IDENTIFY TRENDS FOR COLORADO MOUNTAIN COLLEGE.



FULL-TIME FACULTY 118

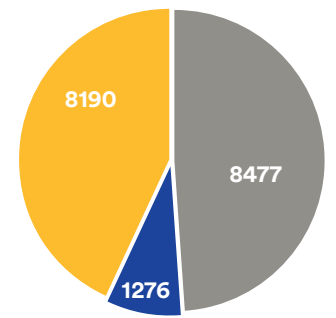
PART-TIME FACULTY 506

FULL-TIME STAFF 421

PART-TIME STAFF 100

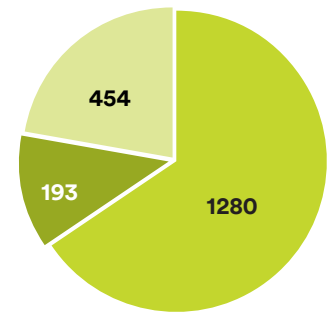


COLLEGE-WIDE STUDENT/FACULTY RATIO (13:1)



College-Wide = 17,943

● Credit Only ● Both ● Non-Credit Only

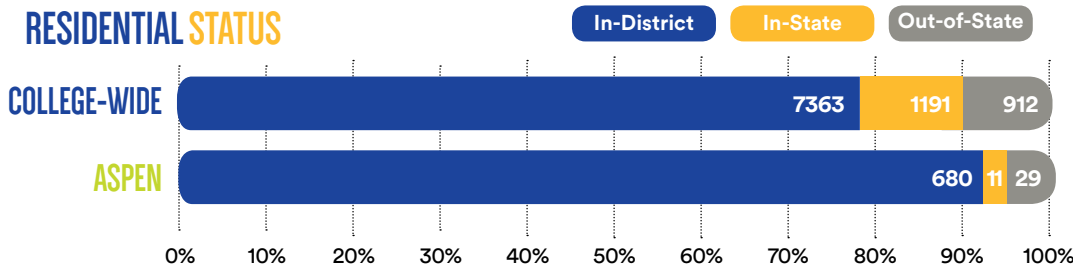


Aspen = 1,927

● Credit Only ● Both ● Non-Credit Only

NUMBER OF STUDENTS BY CREDIT TYPE

### RESIDENTIAL STATUS



% OF ALL STUDENTS

13%

1215

HIGH SCHOOL STUDENTS CONCURRENTLY ENROLLED IN CMC CREDIT COURSES

● College-Wide ● Aspen

7%


45

“CMC OFFERS STUDENTS  
THE CHOICE TO LIVE,  
WORK, LEARN, AND  
CONTRIBUTE TO THE  
VITALITY OF OUR  
BEAUTIFUL ROCKY  
MOUNTAIN COMMUNITIES.  
IT IS POSITIONED TO  
INNOVATE AND SERVE  
STUDENTS LIKE FEW  
OTHER INSTITUTIONS.”

- Dr. Carrie Besnette Hauser,  
CMC President & CEO

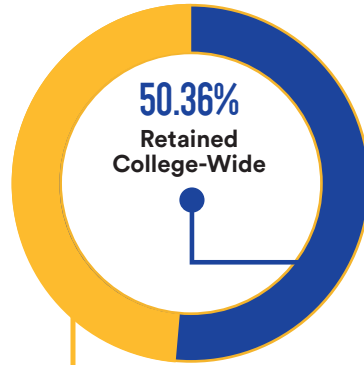
**3<sup>rd</sup>** MOST AFFORDABLE  
PUBLIC FOUR-YEAR  
DEGREE IN THE COUNTRY  
- U.S. Department of Education

**38%**  
TRANSFER RATE  
to another institution  
(College-Wide)


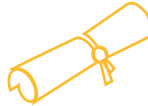



**RETENTION FA14 TO FA15**

First time, full-time  
degree seeking students.



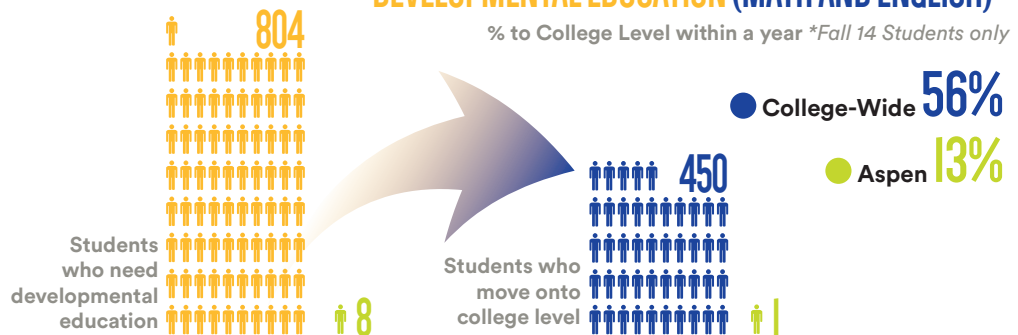
College-Wide = **417 STUDENTS**

	College-Wide	Aspen
 BACHELOR / 103		2
 ASSOCIATE / 491		13
 CERTIFICATE / 513		24

**NUMBER OF GRADUATES**  
(Highest Degree Only)

**DEVELOPMENTAL EDUCATION (MATH AND ENGLISH)**

% to College Level within a year \*Fall 14 Students only



**SNAPSHOT /**

**COLLEGE-WIDE**

**ASPEN**

GENDER	COLLEGE-WIDE		ASPEN	
	CREDIT	NON-CREDIT	CREDIT	NON-CREDIT
Female	57.07%	59.71%	69.15%	66.73%
Male	42.93%	37.68%	42.66%	32.04%
Undisclosed	--	2.60%	--	1.22%
ETHNICITY	COLLEGE-WIDE		ASPEN	
	CREDIT	NON-CREDIT	CREDIT	NON-CREDIT
Hispanic	15.84%	17.96%	10.23%	19.55%
US Minorities	4.72%	2.52%	7.29%	3.94%
Undisclosed	12.94%	29.32%	11.01%	19.96%
White	66.50%	50.19%	71.47%	56.55%
<b>TOTAL</b>	<b>9466</b>	<b>9753</b>	<b>645</b>	<b>1473</b>

-- = less than 10 individuals, unable to report.

**% OF STUDENTS  
RECEIVING FINANCIAL AID**

% Degree Students with At Least 6 Credits  
who were awarded Need Based Aid

