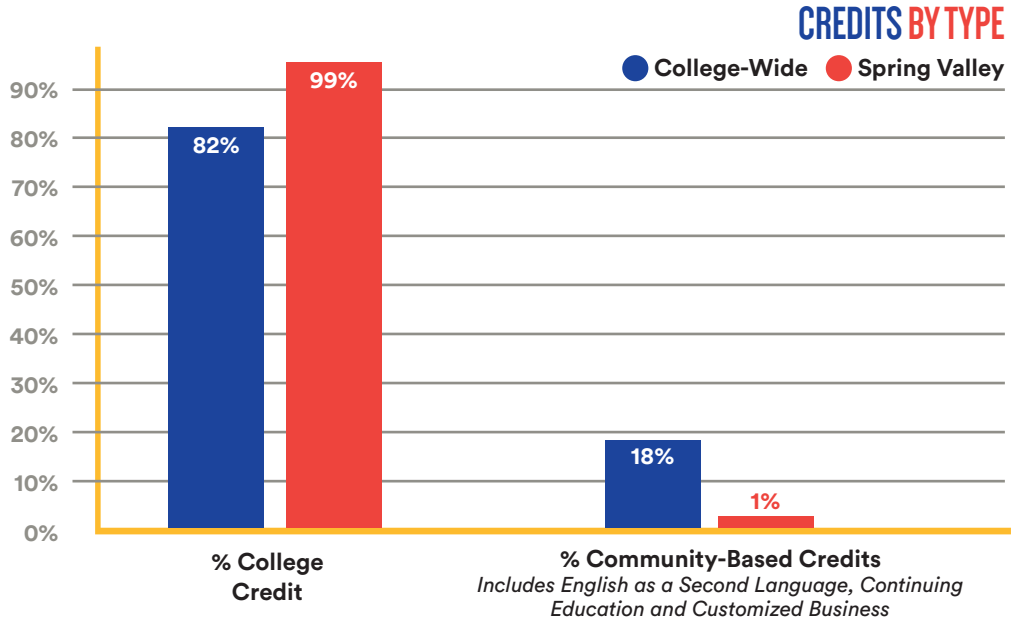


THIS INFORMATION IS USED TO IDENTIFY TRENDS FOR COLORADO MOUNTAIN COLLEGE.



FULL-TIME FACULTY 118

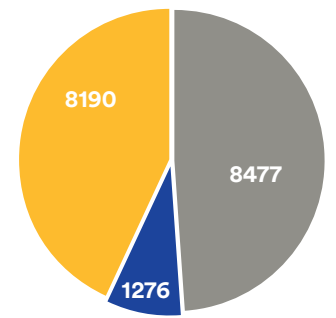
PART-TIME FACULTY 506

FULL-TIME STAFF 421

PART-TIME STAFF 100

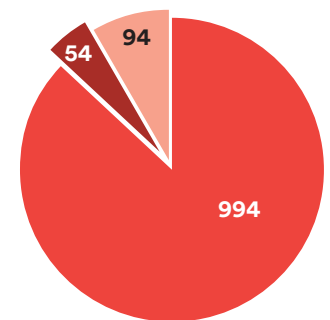


COLLEGE-WIDE STUDENT/FACULTY RATIO (13:1)



College-Wide = 17,943

● Credit Only ● Both ● Non-Credit Only

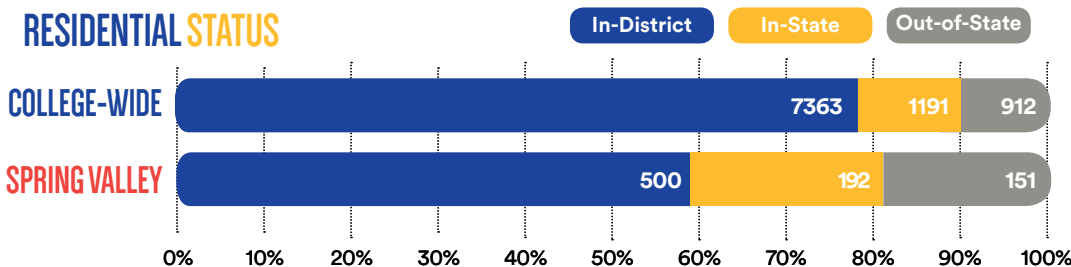


Spring Valley = 1,142

● Credit Only ● Both ● Non-Credit Only

NUMBER OF STUDENTS BY CREDIT TYPE

RESIDENTIAL STATUS



% OF ALL STUDENTS
13%

1215

19

HIGH SCHOOL STUDENTS CONCURRENTLY ENROLLED IN CMC CREDIT COURSES


● College-Wide
● Spring Valley

2%

“CMC OFFERS STUDENTS THE CHOICE TO LIVE, WORK, LEARN, AND CONTRIBUTE TO THE VITALITY OF OUR BEAUTIFUL ROCKY MOUNTAIN COMMUNITIES. IT IS POSITIONED TO INNOVATE AND SERVE STUDENTS LIKE FEW OTHER INSTITUTIONS.”

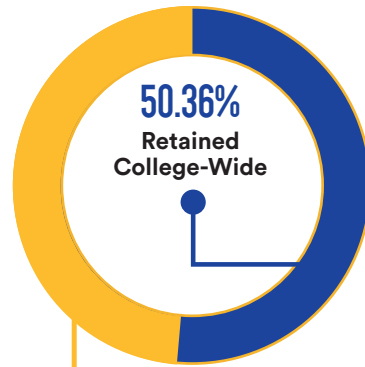
- Dr. Carrie Besnette Hauser,
CMC President & CEO

3rd MOST AFFORDABLE PUBLIC FOUR-YEAR DEGREE IN THE COUNTRY
- U.S. Department of Education


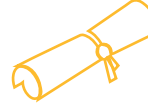

38% 
TRANSFER RATE
to another institution
(College-Wide)

RETENTION FA 14 TO FA 15

First time, full-time degree seeking students.



College-Wide = **417 STUDENTS**

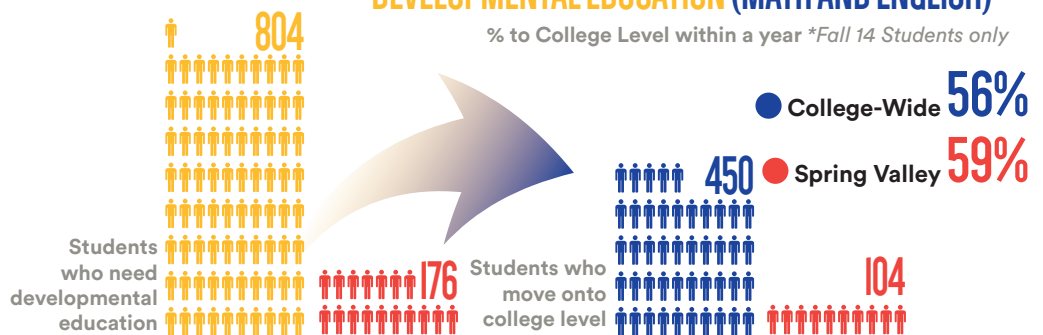
	College-Wide	Spring Valley
 BACHELOR / 103		8
 ASSOCIATE / 491		100
 CERTIFICATE / 513		64

NUMBER OF GRADUATES

(Highest Degree Only)

DEVELOPMENTAL EDUCATION (MATH AND ENGLISH)

% to College Level within a year *Fall 14 Students only



SNAPSHOT /

COLLEGE-WIDE

SPRING VALLEY

GENDER	COLLEGE-WIDE		SPRING VALLEY	
	CREDIT	NON-CREDIT	CREDIT	NON-CREDIT
Female	57.07%	59.71%	58.40%	61.49%
Male	42.93%	37.68%	41.60%	38.51%
Undisclosed	--	2.60%	--	--
ETHNICITY	COLLEGE-WIDE		SPRING VALLEY	
	CREDIT	NON-CREDIT	CREDIT	NON-CREDIT
Hispanic	15.84%	17.96%	21.09%	10.81%
US Minorities	4.72%	2.52%	7.44%	--
Undisclosed	12.94%	29.32%	6.30%	29.05%
White	66.50%	50.19%	65.17%	57.43%
TOTAL	9466	9753	1048	137

-- = less than 10 individuals, unable to report.

% OF STUDENTS RECEIVING FINANCIAL AID

% Degree Students with At Least 6 Credits who were awarded Need Based Aid

