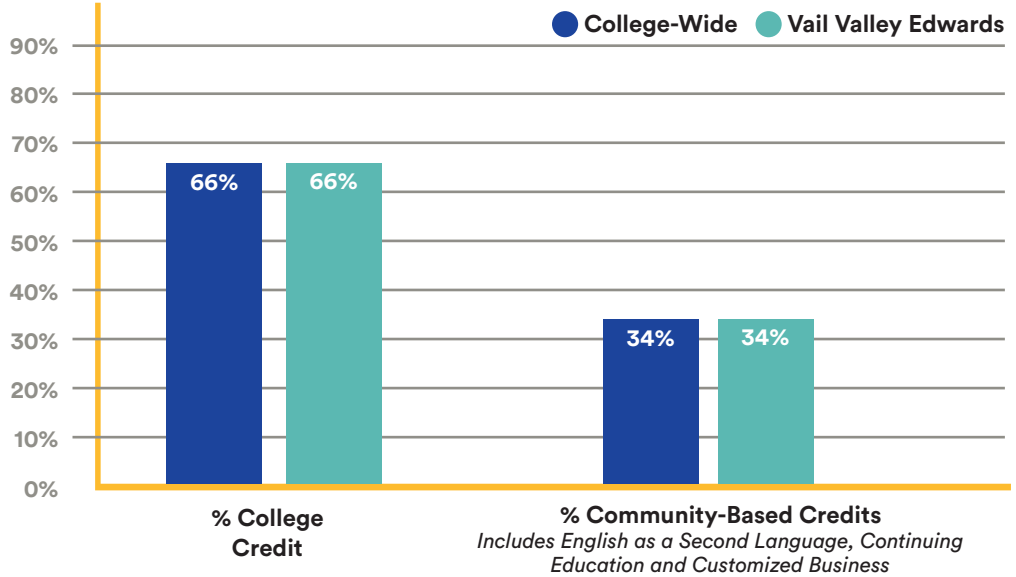


THIS INFORMATION IS USED TO IDENTIFY TRENDS FOR COLORADO MOUNTAIN COLLEGE.

COURSES BY TYPE



FULL-TIME FACULTY 115

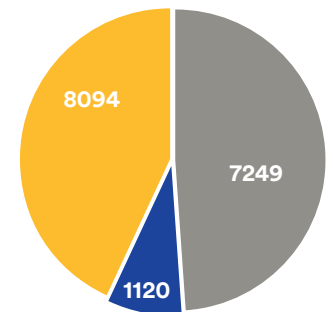
PART-TIME FACULTY 537

FULL-TIME STAFF 300

PART-TIME STAFF 250



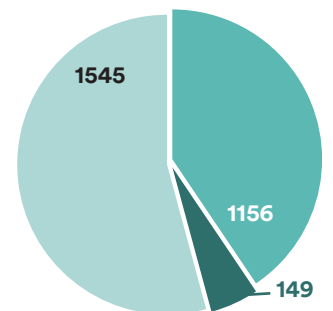
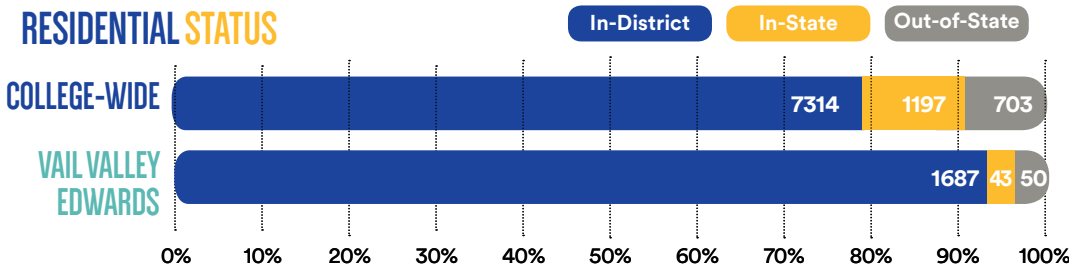
COLLEGE-WIDE STUDENT/FACULTY RATIO (13:1)



College-Wide = 16,463

● Credit Only ● Both ● Non-Credit Only

RESIDENTIAL STATUS



Vail Valley Edwards = 2,850

● Credit Only ● Both ● Non-Credit Only

% OF ALL STUDENTS
14%

1317



HIGH SCHOOL STUDENTS CONCURRENTLY ENROLLED IN CMC CREDIT COURSES

● College-Wide ● Vail Valley Edwards

21%

356

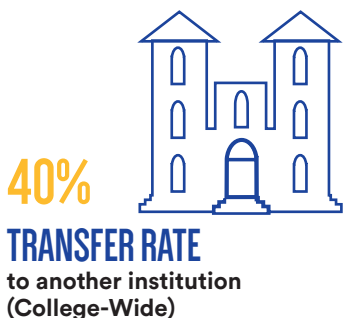
NUMBER OF STUDENTS BY CREDIT TYPE

“CMC OFFERS STUDENTS THE CHOICE TO LIVE, WORK, LEARN AND CONTRIBUTE TO THE VITALITY OF OUR BEAUTIFUL ROCKY MOUNTAIN COMMUNITIES. IT IS POSITIONED TO INNOVATE AND SERVE STUDENTS LIKE FEW OTHER INSTITUTIONS.”

- Dr. Carrie Besnette Hauser, CMC President & CEO

3rd MOST AFFORDABLE PUBLIC FOUR-YEAR DEGREE IN THE COUNTRY

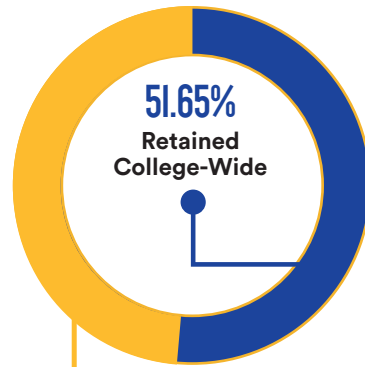
*based on 2015 IPEDS Institutional Characteristics data




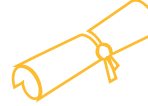

*2015 IPEDS cohort

RETENTION FA15 TO FA16

First time, full-time degree-seeking students



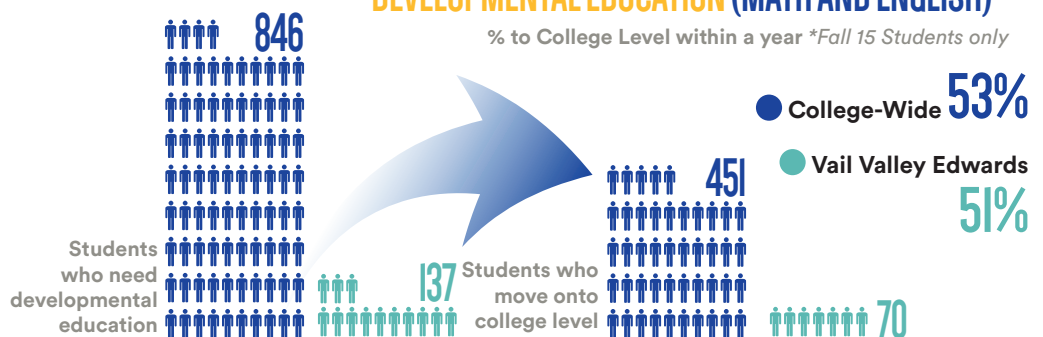
College-Wide = **395 STUDENTS**

	College-Wide	Vail Valley Edwards
 BACHELOR / 130		18
 ASSOCIATE / 509		81
 CERTIFICATE / 560		103

NUMBER OF GRADUATES
(Highest Degree Only)

DEVELOPMENTAL EDUCATION (MATH AND ENGLISH)

% to College Level within a year *Fall 15 Students only



SNAPSHOT /

COLLEGE-WIDE

VAIL VALLEY EDWARDS

GENDER	COLLEGE-WIDE		VAIL VALLEY EDWARDS	
	CREDIT	NON-CREDIT	CREDIT	NON-CREDIT
Female	55.42%	63.58%	57.50%	64.98%
Male	44.58%	34.05%	42.50%	34.79%
Undisclosed	--	2.37%	--	0.23%
ETHNICITY	COLLEGE-WIDE		VAIL VALLEY EDWARDS	
	CREDIT	NON-CREDIT	CREDIT	NON-CREDIT
Hispanic	16.38%	17.40%	24.44%	21.99%
US Minorities	5.25%	2.62%	4.25%	2.30%
Undisclosed	12.06%	26.42%	27.74%	36.40%
White	66.31%	53.55%	43.57%	39.31%
TOTAL	8079	8356	1694	1305

% OF STUDENTS RECEIVING FINANCIAL AID

% Degree Students with At Least 6 Credits who were awarded Need-Based Aid

